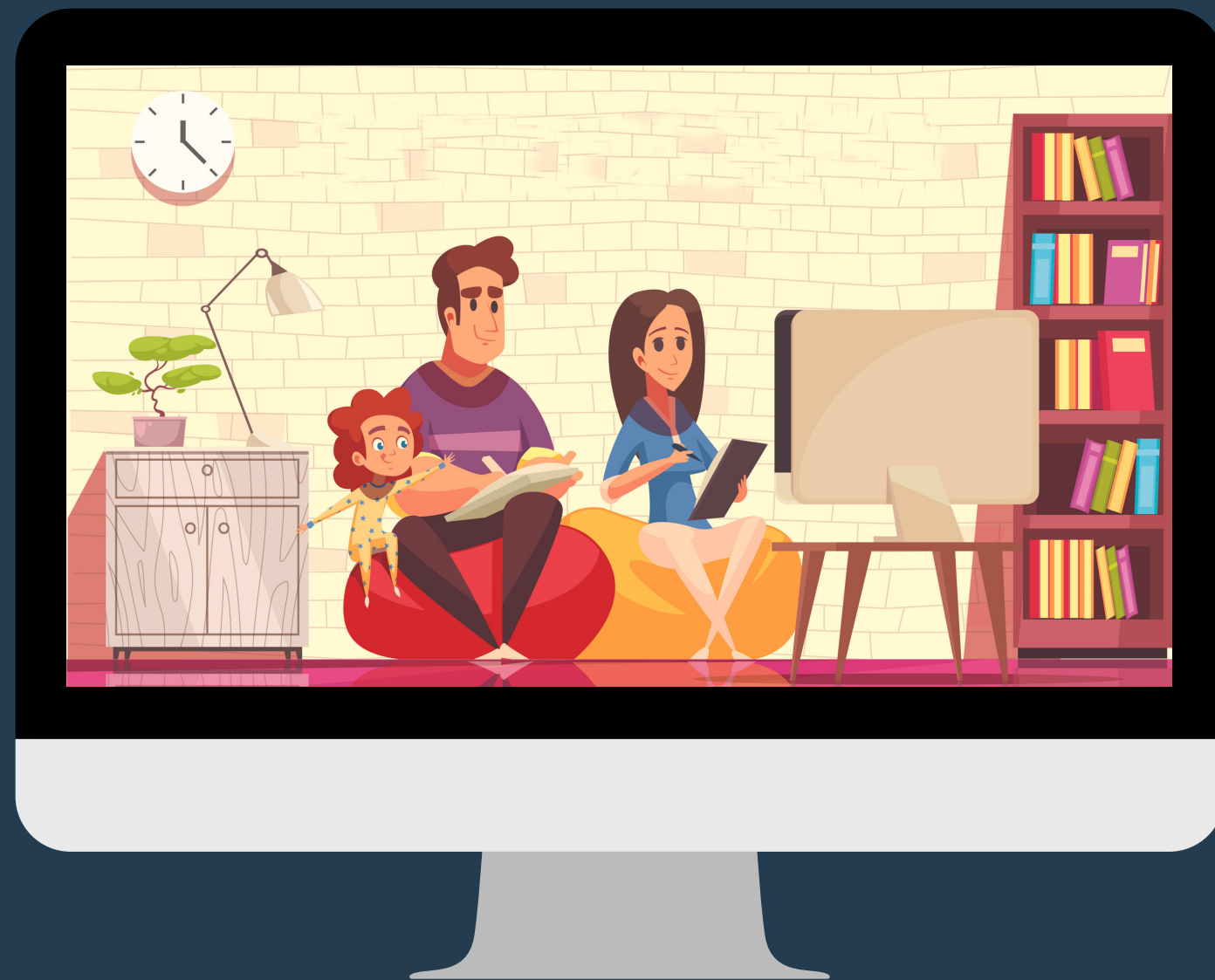


NEW ZEALAND SPEECH-LANGUAGE THERAPISTS' ASSOCIATION

ENGAGING FAMILIES OF YOUNG CHILDREN WITH COMMUNICATION DIFFICULTIES VIA TELEPRACTICE



FACILITATOR:
FELIPE RETAMAL-WALTER
SPEECH-LANGUAGE PATHOLOGIST &
PHD CANDIDATE
THE UNIVERSITY OF QUEENSLAND



New Zealand
Speech-language
Therapists' Association
*Te Kāhui Kaiwhakatikatika
Reo Kōrero o Aotearoa*

WEDNESDAY, 27 OCTOBER 2021
1-2 PM (AUCKLAND)
10-11 AM (BRISBANE)